

JIMMY EKO9090



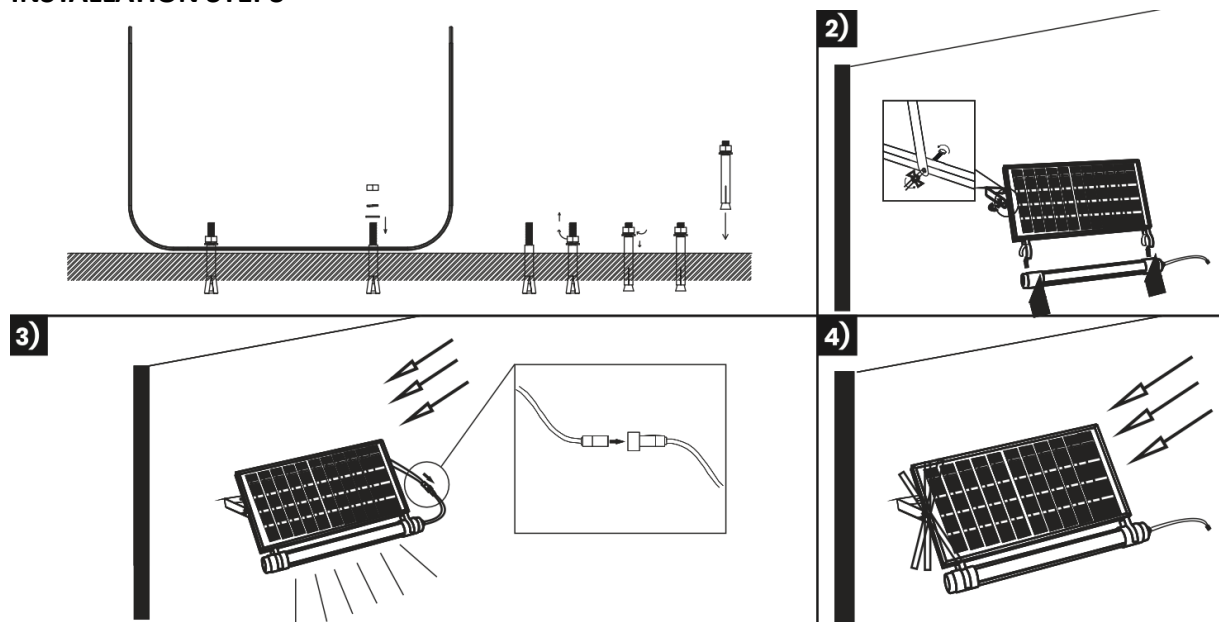
EKO-LIGHT TEAM SP. Z O.O. [W] www.eko-light.com
UL. GŁÓWNA 142 [T] +48 666 503 333
42-280 CZĘSTOCHOWA [M] biuro@eko-light.com
POLAND



NOTES

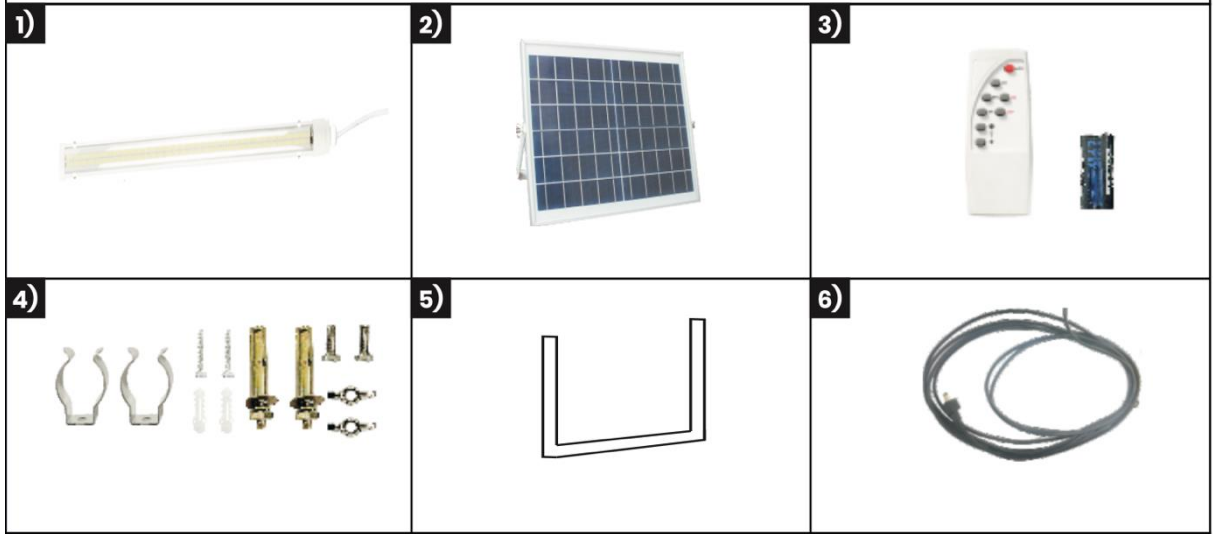
- The LED tube can also be mounted separately on the wall (within 5 meters of the solar panel)
- The LED tube can be easily removed separately and used as a flashlight controlled by a remote control.

INSTALLATION STEPS

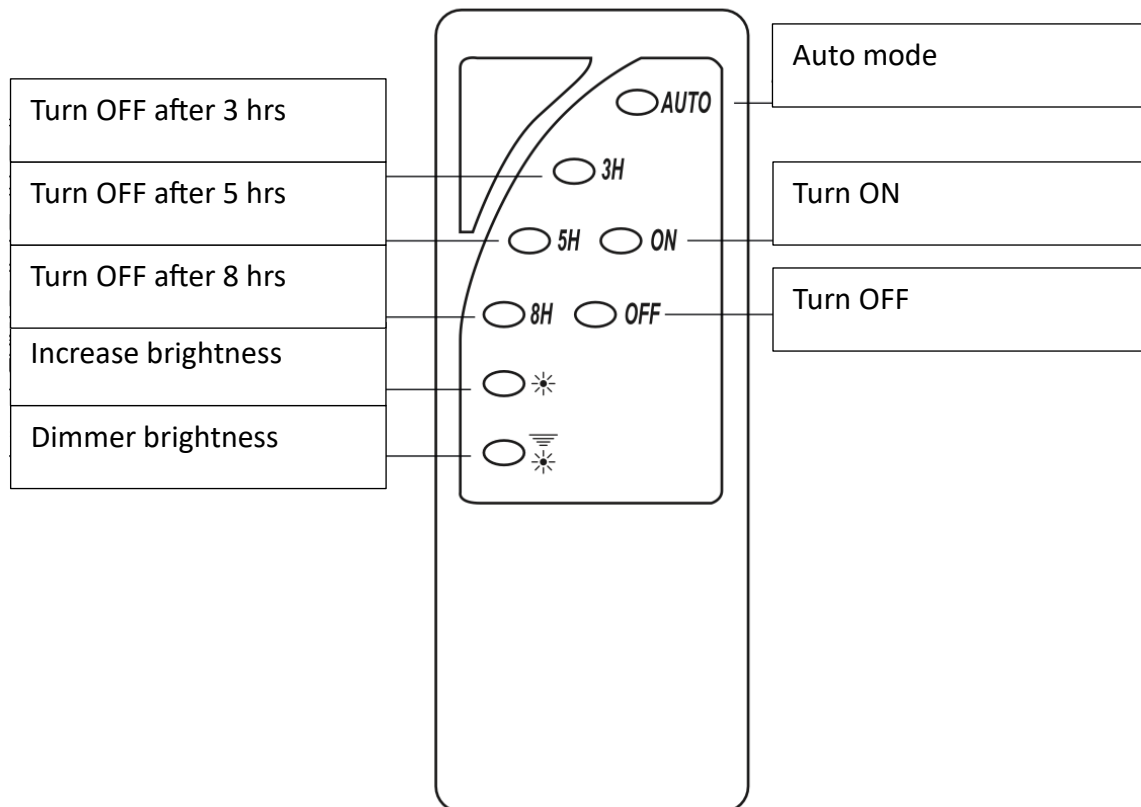


1. Install the bracket to the wall.
2. Assemble the solar panel to the bracket fixed on the wall, then use screws to fix the two brackets to the bottom of the solar panel; push the LED tubes to the brackets and make sure that the direction of the lamp bead is facing outward.
3. Connect the solar panel and LED tube, and tighten the waterproof connector.
4. Adjust the solar panel so that it is facing the sun and the LED tube is facing the place you want to illuminate.

JIMMY EKO9090



1. Solar light
2. Solar panel
3. RC + batteries
4. Clips + screws
5. Panel bracket
6. Wire with a length of 5 m





ENVIRONMENTAL INFORMATION

Waste electrical equipment is recyclable and must not be disposed of in the household waste bin (labeled in the text) as it may contain substances that are hazardous to health, life, and the environment. According to the WEEE Directive (Directive 2012/19/EU) applicable in the EU, separate disposal methods must be implemented for used electrical and electronic equipment. A user who intends to dispose of such a product is obliged to hand it over to a collection point for used equipment, e.g. a retailer of such equipment or another waste collector authorized to collect such waste. The above obligations arise from the Act of 11th of September 2015 on waste electrical and electronic equipment (Journal of Laws No. 0, item 1688) and are intended to ensure an appropriate level of collection, recovery, and recycling of waste equipment, and thus contribute to the protection of the environment.